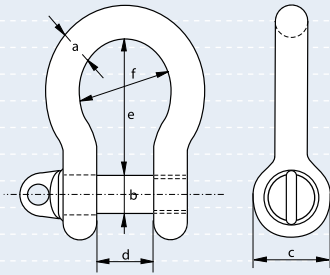
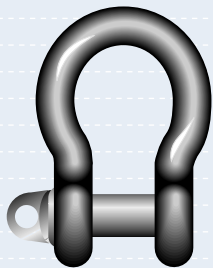


Small Bow Shackles - Quality Range with type A screw collar pin

- **Material** : body and pin high tensile steel
- **Safety Factor** : MBL equals 5 x WLL
- **Standard** : B.S. 3032 table 4 - 1958
- **Finish** : self colour or hot dipped galvanised
- **Certificates** : as standard a works certificate is supplied
also upon request a certificate of basic raw material
and/or an EC declaration of conformity

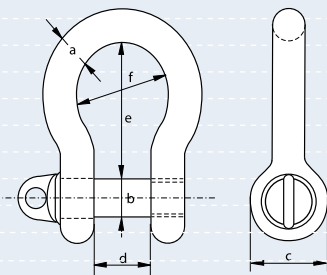


working load limit	diameter bow	diameter pin	diameter eye	inside width	inside length	width bow	weight each
tons	a inch	b inch	c inch	d inch	e inch	f inch	kg
0.50	3/8	1/2	1	5/8	1 1/2	7/8	0.18
1.00	1/2	5/8	1 1/4	7/8	2	1 1/8	0.34
1.50	5/8	3/4	1 1/2	1 1/8	2 1/2	1 1/2	0.62
2.00	3/4	7/8	1 3/4	1 3/8	3	1 3/4	1.05
3.00	7/8	1	2	1 1/2	3 1/2	2	1.63
4.00	1	1 1/8	2 1/4	1 3/4	4	2 3/8	2.28
5.00	1 1/8	1 1/4	2 1/2	2	4 1/2	2 5/8	3.20
6.25	1 1/4	1 3/8	2 3/4	2 1/4	5	3	4.54
7.50	1 3/8	1 1/2	3	2 3/8	5 1/2	3 1/4	5.74
9.25	1 1/2	1 3/4	3 1/2	2 5/8	6	3 1/2	8.51
10.50	1 5/8	1 7/8	3 3/4	2 7/8	6 1/2	3 7/8	11.23
12.50	1 3/4	2	4	3 1/8	7	4 1/8	13.47



Small Bow Shackles - Economy Range with type A screw collar pin

- **Material** : body and pin high tensile steel
- **Safety Factor** : MBL equals 5 x WLL
- **Standard** : generally to B.S. 3032 table 4 - 1958
- **Finish** : self colour
- **Certificates** : as standard a works certificate is supplied
also upon request a certificate of basic raw material
and/or an EC declaration of conformity



working load limit	diameter bow	diameter pin	diameter eye	inside width	inside length	width bow	weight each
tons	a inch	b inch	c inch	d inch	e inch	f inch	kg
0.50	3/8	1/2	1	5/8	1 1/2	7/8	0.18
1.00	1/2	5/8	1 1/4	7/8	2	1 1/8	0.34
1.50	5/8	3/4	1 1/2	1 1/8	2 1/2	1 1/2	0.62
2.00	3/4	7/8	1 3/4	1 3/8	3	1 3/4	1.05
3.00	7/8	1	2	1 1/2	3 1/2	2	1.63
4.00	1	1 1/8	2 1/4	1 3/4	4	2 3/8	2.28
5.00	1 1/8	1 1/4	2 1/2	2	4 1/2	2 5/8	3.20
6.25	1 1/4	1 3/8	2 3/4	2 1/4	5	3	4.54
7.50	1 3/8	1 1/2	3	2 3/8	5 1/2	3 1/4	5.74
9.25	1 1/2	1 3/4	3 1/2	2 5/8	6	3 1/2	8.51