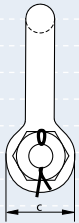
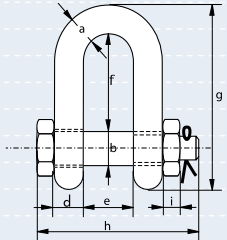


# Green Pin® Polar Dee Shackles

## with safety bolt, for use under extreme climatic conditions

- **Material** : bow and pin alloy steel, Grade 8, quenched and tempered
- **Safety Factor** : MBL equals 6 x WLL
- **Standard** : EN 13889 and  
meets performance requirements of US Fed. Spec. RR-C-271 Type IVB Class 3, Grade A
- **Finish** : hot dipped galvanised
- **Temperature Range** : -40 °C up to +200 °C
- **Certificates** : as standard a works certificate is supplied, also upon request a certificate of basic raw material, manufacturer test certificate and/or EC declaration of conformity



working load limit	diameter bow	diameter pin	diameter eye	width eye	width inside	length inside	length bolt	length nut	thickness nut	weight each
tons	a mm	b mm	c mm	d mm	e mm	f mm	g mm	h mm	i mm	kg
2	13.5	16	34	13.5	22	43	85	83	13	0.39
3.25	16	19	40	16	27	51	105	99	17	0.67
4.75	19	22	47	19	31	59	125	115	20	1.08
6.5	22	25	53	22	36	73	144	131	23	1.66
8.5	25	28	60	25	43	85	161	151	25	2.46
9.5	28	32	67	28	47	90	179	167	28	3.40
12	32	35	74	32	51	94	199	179	31	4.51
13.5	35	38	80	35	57	115	220	198	34	6.10
17	38	42	89	38	60	127	239	203	19	7.63
25	45	50	104	45	74	149	283	244	24	13.25
35	50	57	119	50	83	171	333	270	27	18.53
42.5	57	65	134	57	95	190	360	302	30	25.94
55	65	70	145	65	105	203	399	330	33	35.33
85	75	83	163	75	127	229	455	376	40	52.97

In inch

working load limit	diameter bow	diameter pin	diameter eye	width eye	width inside	length inside	length bolt	length nut	thickness nut	weight each
tons	a inch	b inch	c inch	d inch	e inch	f inch	g inch	h inch	i inch	lbs
2	1/2	5/8	1 11/32	17/32	7/8	1 23/32	3 11/32	3 9/32	17/32	0.85
3.25	5/8	3/4	1 19/32	5/8	1 3/32	2	4 1/8	3 29/32	11/16	1.48
4.75	3/4	7/8	1 7/8	3/4	1 1/4	2 5/16	4 29/32	4 17/32	25/32	2.39
6.5	7/8	1	2 3/32	7/8	1 7/16	2 7/8	5 11/16	5 5/32	29/32	3.66
8.5	1	1 1/8	2 11/32	1	1 23/32	3 11/32	6 5/16	5 15/16	1	5.42
9.5	1 1/8	1 1/4	2 5/8	1 1/8	1 7/8	3 9/16	7 1/32	6 9/16	1 1/8	7.50
12	1 1/4	1 3/8	2 29/32	1 9/32	2	3 23/32	7 13/16	7 1/32	1 1/4	9.95
13.5	1 3/8	1 1/2	3 5/32	1 3/8	2 1/4	4 17/32	8 11/16	7 25/32	1 11/32	13.45
17	1 1/2	1 5/8	3 1/2	1 17/32	2 11/32	5	9 3/8	8	3/4	16.82
25	1 3/4	2	4 1/8	1 25/32	2 29/32	5 7/8	11 5/32	9 19/32	1 15/16	29.21
35	2	2 1/4	4 11/16	1 31/32	3 9/32	6 3/4	13 1/8	10 5/8	1 3/32	40.86
42.5	2 1/4	2 9/16	5 9/32	2 1/4	3 3/4	7 1/2	14 5/32	11 29/32	1 3/16	57.19
55	2 1/2	2 3/4	5 3/4	2 9/16	4 1/8	8	15 23/32	13	1 5/16	77.89
85	3	3 1/4	6 7/16	2 15/16	5	9	17 29/32	14 25/32	1 19/32	116.77



**DNV**

TYPE APPROVED PRODUCT  
CERTIFICATION NOTE 2.7-1  
CERTIFICATE NO. S-4269

