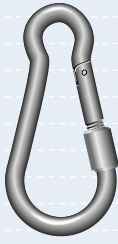
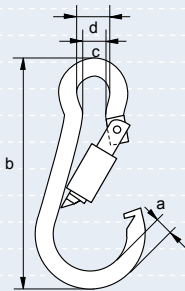


Carbine Hooks

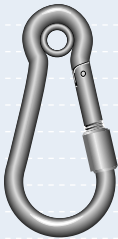
with screw nut



- **Material** : mild steel
- **Finish** : electro-galvanised
- **Note** : the minimum breaking load shown below is for guidance only the product is not suitable for lifting purposes



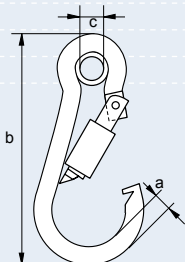
| diameter | length | width inside | width inside | minimum breaking load | weight per 100 pcs |
|----------|--------|--------------|--------------|-----------------------|--------------------|
| a mm | b mm | c mm | d mm | kg | kg |
| 4 | 40 | 4 | 7 | - | 1.7 |
| 5 | 50 | 5 | 7 | 100 | 1.9 |
| 6 | 60 | 6 | 8 | 120 | 2.9 |
| 7 | 70 | 7 | 10 | 180 | 4.6 |
| 8 | 80 | 10 | 12 | 300 | 6.9 |
| 9 | 90 | 12 | 12 | 330 | 10.3 |
| 10 | 100 | 13 | 15 | 460 | 13.4 |
| 11 | 120 | 13 | 16 | 600 | 19.0 |
| 12 | 140 | 15 | 19 | 680 | 26.5 |



Carbine Hooks

with pressed thimble and screw nut

- **Material** : mild steel
- **Finish** : electro-galvanised
- **Note** : the minimum breaking load shown below is for guidance only the product is not suitable for lifting purposes



| diameter | length | diameter inside thimble | minimum breaking load | weight per 100 pcs |
|----------|--------|-------------------------|-----------------------|--------------------|
| a mm | b mm | c mm | kg | kg |
| 4 | 40 | 4 | - | 0.8 |
| 5 | 50 | 5 | 100 | 1.6 |
| 6 | 60 | 6 | 120 | 2.6 |
| 7 | 70 | 7 | 180 | 4.4 |
| 8 | 80 | 9 | 300 | 6.4 |
| 9 | 90 | 10 | 330 | 9.3 |
| 10 | 100 | 11 | 460 | 12.5 |
| 11 | 120 | 12 | 600 | 19.5 |
| 12 | 140 | 13 | 680 | 25.0 |